

TactEx Industries

1390 Springhill Rd

Parksville, BC V9P2T2 CANADA

250-905-0628

www.tactexindustries.com





Engineered Feed Frame

Our Custom in-house made feed frame is like no other on the market today. It was designed to be light weight and strong. Engineered with the right material and formed components giving it an increased yield strength. Using CNC processes, we eliminate weight where it does not affect the structural qualities giving us the strongest pound for pound feed frame in the industry. From the zinc coated rails, powder coated finish and certified lifting point we are excited to see these perform for our customers.

Mast Dump

One of the most popular features of this system is the 24" mast dump sub frame, allowing a lower head height for easier rod and core handling. The engineered connection point between the feed frame and this mast dump section gives us the ability to have the correct bushings and tolerances in the main pivot connection and hoist cylinders and still have a simple and quick removal of the feed frame. Whether in a shack, track system or our FX-10 heli-portable platform, you will reach your clients targets with this system.



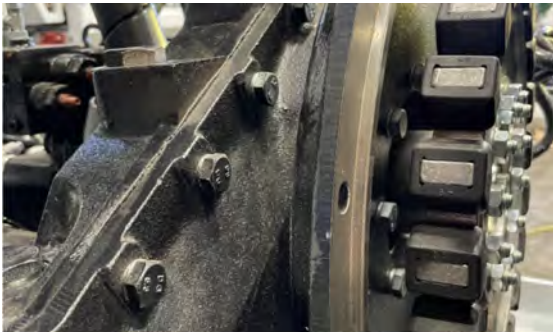
Levelwind Winch

The TactEx Levelwind winch with guarding is stock on every X-10. This reduces the risk of injury for the helper and increases productivity on the drill.

Aluminum Components

On components where strength and durability are less of a concern the engineering team at TactEx has incorporated lighter materials including an aluminum hydraulic tank, aluminum hydraulic pack structure, aluminum stinger/tower and many other components.





Pump Drive

The X-10 has a pump drive that couples directly to the engine. This feature gives you a better connection, quick and easy separation of the engine and power pack. The pump drive also gives us an overall shorter power pack with no need for guarding over a spinning diveshaft.

Removable Skids

Having the option of mounting this drill in a shack and on tracks without the base skid gives the operators more room and movement around the drill, allows for a better and more secure connection to the platform, lowers the overall working height and reduces weight.

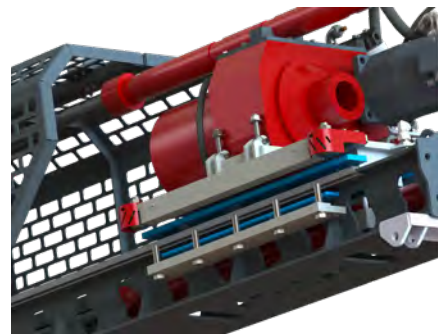


Engine Options

Engine options include a Tier 4, 4 cylinder turbo charged Cummins engine or a Tier 1, 6 cylinder engine for some international clients.

UHMW Saddle Slide

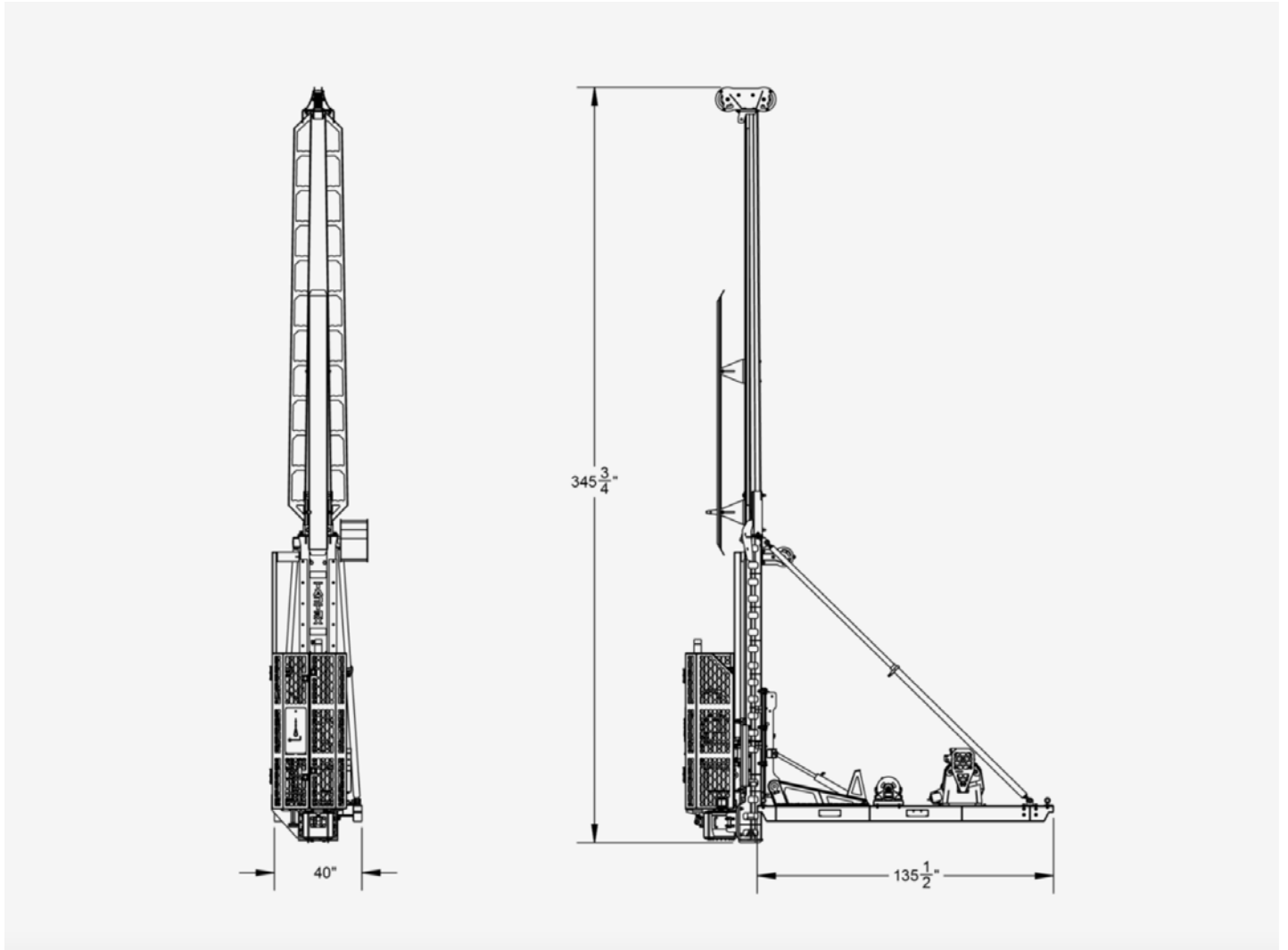
Our drill saddle slides on high quality UHMW with roller bearing on the low PSI areas and zinc coated rails gives it a long wear life and easy to replace components.





Control Panel

The TactEx X-10 control panel provides all the important information and very responsive controls to the driller. All functions are isolated until the hydraulic toggle is "ON" making them live. All Auxiliary and set up functions are switched on and off from the toggles. For safety, the first of two "E-Stops" is mounted front and center, there is even warning light for hydraulic fluid temperature.



TACTEX
INDUSTRIES

1390 Springhill Rd
Parksville, BC V9P2T2 CANADA
250-905-0628
www.tactexindustries.com

Specifications

ENGINE

- Tier 4 Cummins Turbo Diesel 180 Horsepower 4 cylinder

HYDRAULIC SYSTEM

- Air cooled hydraulics system
- Hydraulic Pilot Controls makes and features efficient Splitter box / pump drive system eliminates drive shaft
- Rexroth and Kawasaki triple pump design
- Synchronized head and foot clamp with options to isolate functions

FEED FRAME

- UHMW slide saddle
- 24" mast dump
- Proprietary feed frame design internally reinforced
- 45,000Lbs pull back double ram
- 45 to 90 degree operational angles

WIRELINE ASSEMBLIES

- Level wind winch 1500m 3/16" wireline capacity
- Rotzler swivel rod hoist

HEAD & FOOT CLAMP

- H heads available
- P Foot Clamps and H drill head

GUARDING

- Full guarding package available for all applications
- Interlock switch for safe drilling operation