

TactEx Industries

1390 Springhill Rd  
Parksville, BC V9P2T2 CANADA

250-905-0628

[www.tactexindustries.com](http://www.tactexindustries.com)

# SX-10 Shack Drill



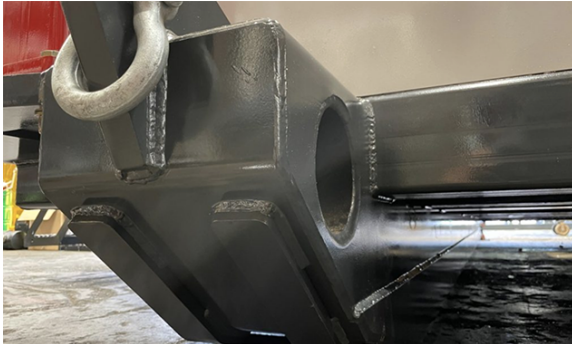


## Removable Undercarriage

The TX-10 undercarriage will work as a rod sloop or the platform for the X-10 Surface diamond drill. This helps to keep spare parts the same and inter-changeability between equipment. Another advantage to integration and the TactEx proprietary platforms.

## Leveling Cylinders With Teeth

Drill targets can be in tight spaces, with the SX-10 skid shack, the leveling rams make set leveling the drill shack a breeze. If minor azimuth adjustments are required the dozer teeth keep the blade where it belongs, not on the side your drill shack walls!



## Reinforced Skidbase

Uneven terrain, a full rod rack skidding from site to site, drill shacks have a big job to fill. The base of our drill shacks have formed heavy wall tube skids with wear strips that act as skis to keep the shack tracking straight while under way.

## Hydraulic Helpers Slideout

Having room for your helper to work while keeping the width of the shack slim can only happen with a hydraulic slide out. A core box table, tool racks and reinforced ring to help empty the core tube make this space safe and efficient to work out of.





## Interior/Exterior Full Led Light Package

Night shift looks like day shift when all the LED lights are shining. A bright interior and exterior make drilling in the shack safer and keeps the crew happy.

## Integrated Guard System

Custom in house drill shack designing allows us to create an integrated drill guard system that keep the crew safe. With interlock switches and a roll away design, it's a combination of safety and accessibility throughout the shift.

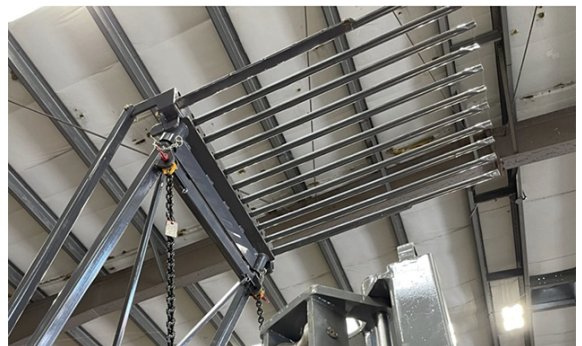


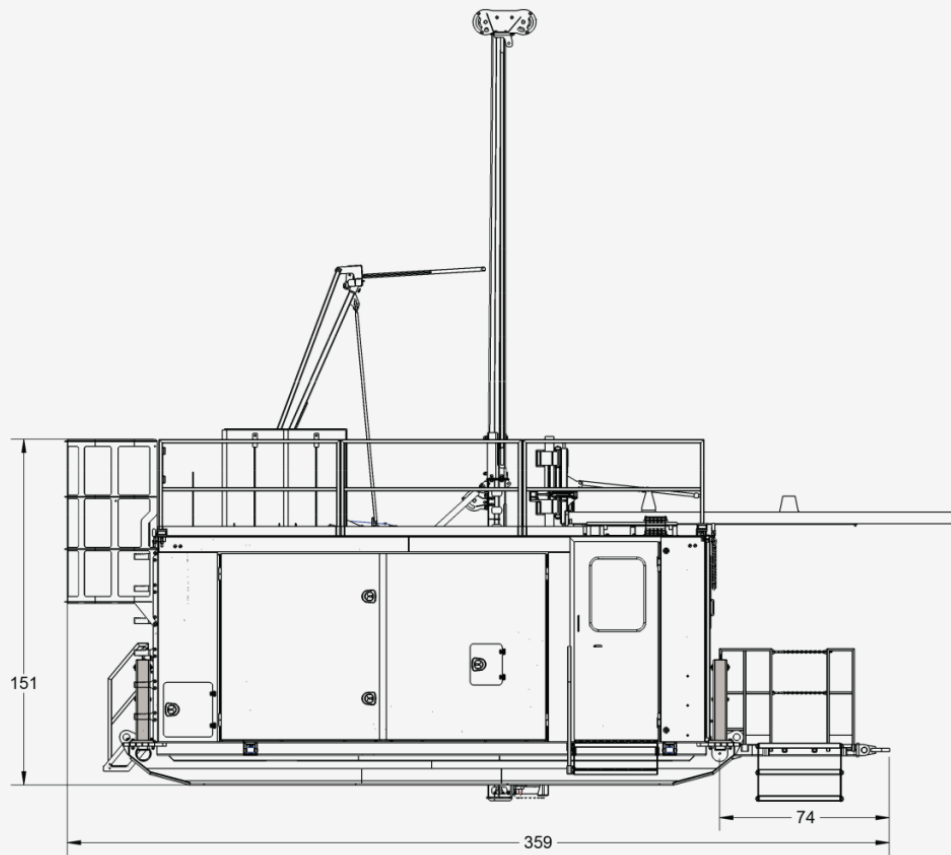
## Ladder And Guard Rails Package

Access to the roof of your drill shack to inspect the rod handler or conduct other work is done safely with a tilting cage around the ladder and removable railings around the drill shack roof.

## Rod Handling And Stacking System

Rod pulls are part of drilling so is keeping your helper safe. With the AVD rod handling system and hydraulic rack bit changes are far less strenuous, faster and safer. Many clients ask prior to awarding contracts what kind of rod handling systems are being used as part of their work safe plan.





**TACTEX**  
INDUSTRIES

1390 Springhill Rd  
Parksville, BC V9P2T2 CANADA  
250-905-0628  
[www.tactexindustries.com](http://www.tactexindustries.com)

## **Specifications**

### **GUARDING**

- Integrated rolling cage guard with Interlock

### **FUEL CAPACITY**

- 250 liter double walled fuel tank

### **ROD CAPACITY**

- 1700m of NQ in 9m lengths

### **WEIGHT**

- 33,000 lbs

### **DIMENSIONS**

- Shipping = 310" Long x 137" Wide x 138" Tall
- Operational = 359" Long x 221" Wide x 151" Tall

### **MUD SYSTEM**

- 650L bottom tank with slide in mixer
- 450L top tank with slide in mixer
- 435 pump mount is integrated directly into the shack